



夹紧气缸 CPR25 Pneumatic clamp CPR25

主要特点:

- 铝制外壳
- 曲柄连杆原理
- 打开角度容易调整
- 通用铁质夹臂 VC 和 OC
- 3 个安装面 (前面, 后面和 Ø30 mm 缸体上)
- 气缸缸径: 25 mm
- 5 个 G1/8" 进气口
- VEP 电感式接近开关 (M12x1 接口)



Main characteristics:

- Aluminum flanks
- Toggle action mechanism
- Opening angle easily adjustable
- Versatile steel arms VC and OC
- 3 mounting areas (front, back and on the cylinder Ø30 mm)
- Pneumatic cylinder bore: 25 mm
- 5 feeding ports G1/8"
- Inductive proximity switch VEP (connection M12x1)



[PDF](#)



[3D Step](#)



[Index](#)

索引.

Index.

页码 Page	描述 Description	
1	主要特点 Main characteristics	
2	订货举例 Ordering example	
3	尺寸页码 Dimensional page	C25-VCI ...
4		C25-OCI...
5		C25-G2...
6	图表 Diagrams	
7	电感式接近开关图表 / 气路图 Diagram for inductive proximity switch / Pneumatic plan	
8	操作说明 Operating instructions	打开角度调整 Opening angle change
9	备件 / Spare parts	
10	备注 / Notes	



订货举例.

Ordering example.

C25 - VC - I - 105 - *C

型号和气缸缸径:
Model and cylinder bore:

C25
CPR 标准夹紧气缸
(气缸缸径 25 mm)
standard clamp CPR
(cylinder bore 25 mm)



接近开关:
Proximity switch:

X: 不带接近开关
without proximity switch

I: VEP 电感式接近开关
inductive proximity switch VEP



打开角度:
Opening angle:

15°	30°	45°	60°	75°	90°	105°
-----	-----	-----	-----	-----	-----	------

夹臂类型:
Type of arm:

XX: 不带夹臂
without arm

VC: “V”型中间夹臂 (见第 3 页)
arm “V” central (see page 3)

OC: “O”型中间夹臂 (见第 4 页)
arm “O” central (see page 4)

G2: “G”型夹臂带两个定位销, 不带固定支架
(见第 5 页)
arm type “G” with 2 pins and
without fixed support (see page 5)

G2/2: “G”型夹臂带两个定位销, 带固定支架
(见第 5 页)
arm type “G” with 2 pins and
with fixed support (see page 5)

备注.:可以通过调整夹臂的安装方向把夹臂 VC 变成 OC
NOTE: It's possible to transform the clamp type VC into the
type OC simply changing the arm position.



锁紧销类型 (见第 9 页):
Type of lockpin (see page 9):

X: 不带销子
without pin

A: 销子带六边形滚花头
pin with hexagonal knurled head

B: 销子带圆头
pin with rounded head

C: 销子带活动滚花头
pin with swinging knurled head

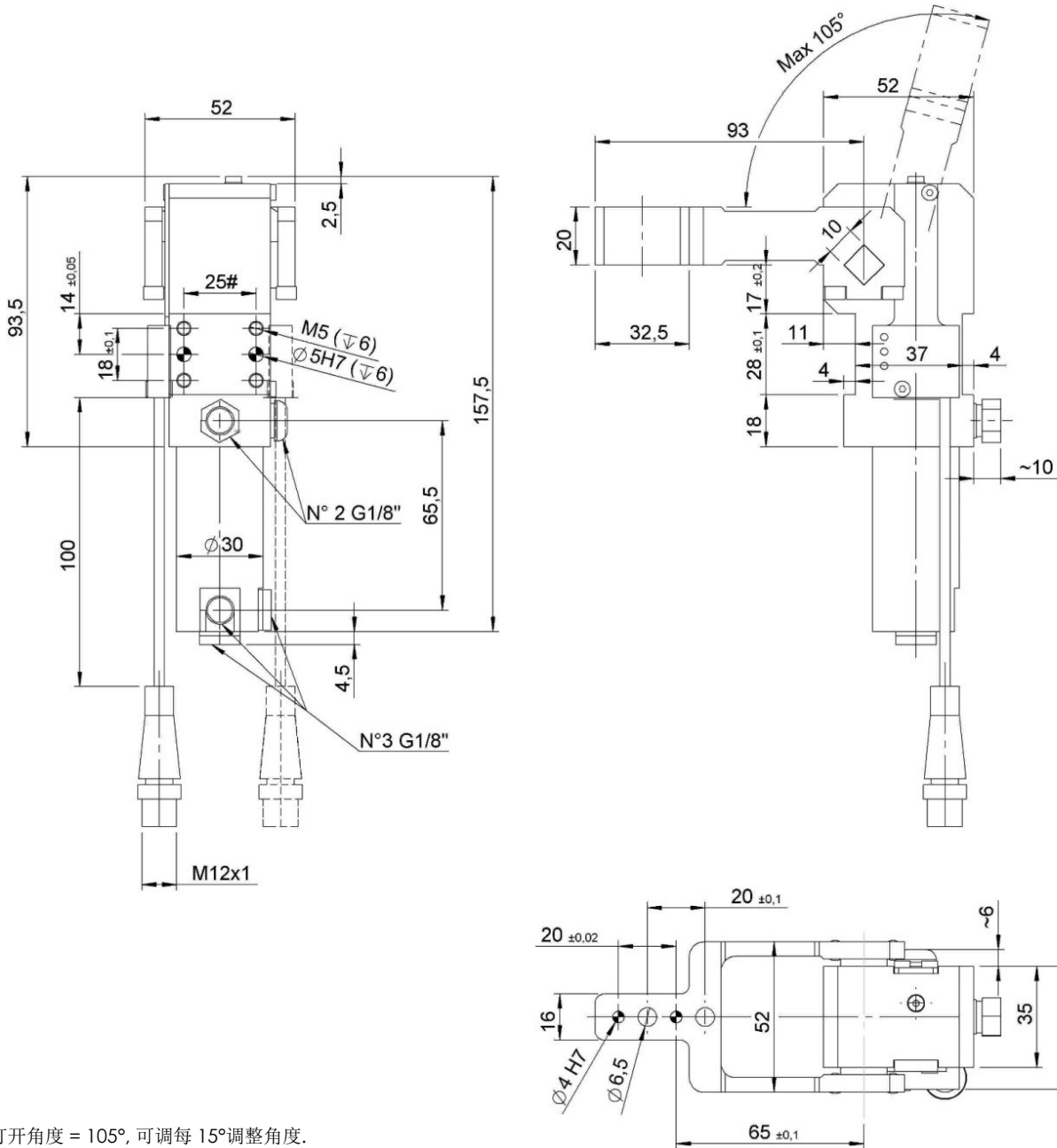
D: 销子带橡胶头
pin with rubber head

* 表明只能配套 “G2”型夹臂
* Indicate only for clamping arm type “G2”



C25-VC...

夹器, D.25, 可调打开角度, 夹臂垂直安装, 0mm 高度
 Clamp, D.25, Vario Op. Angle, Vertical Arm, Offset 0mm



标准打开角度 = 105°, 可调每 15° 调整角度。

Standard opening angle = 105°, it's possible to set a lower angles with steps of 15°.

#公差: 定位销孔 ±0.02, 螺丝孔 ±0.1

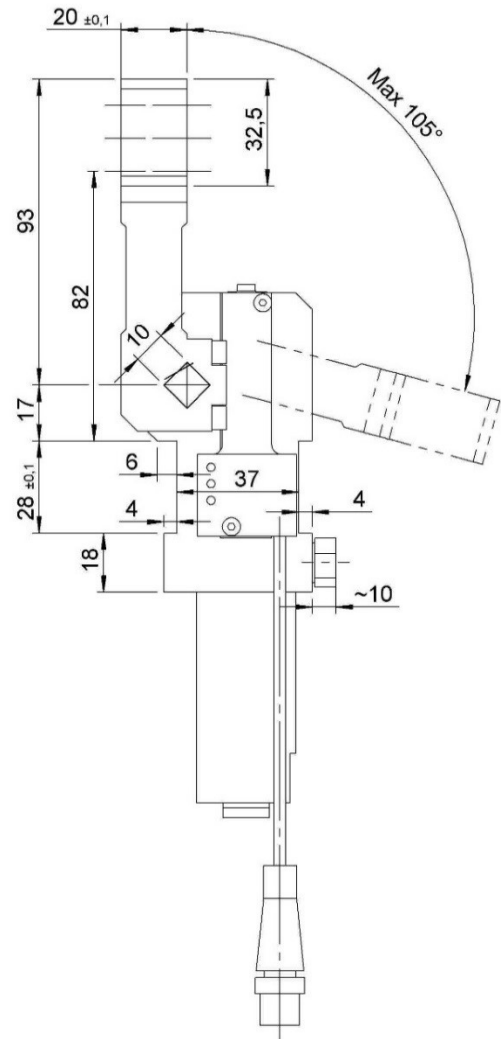
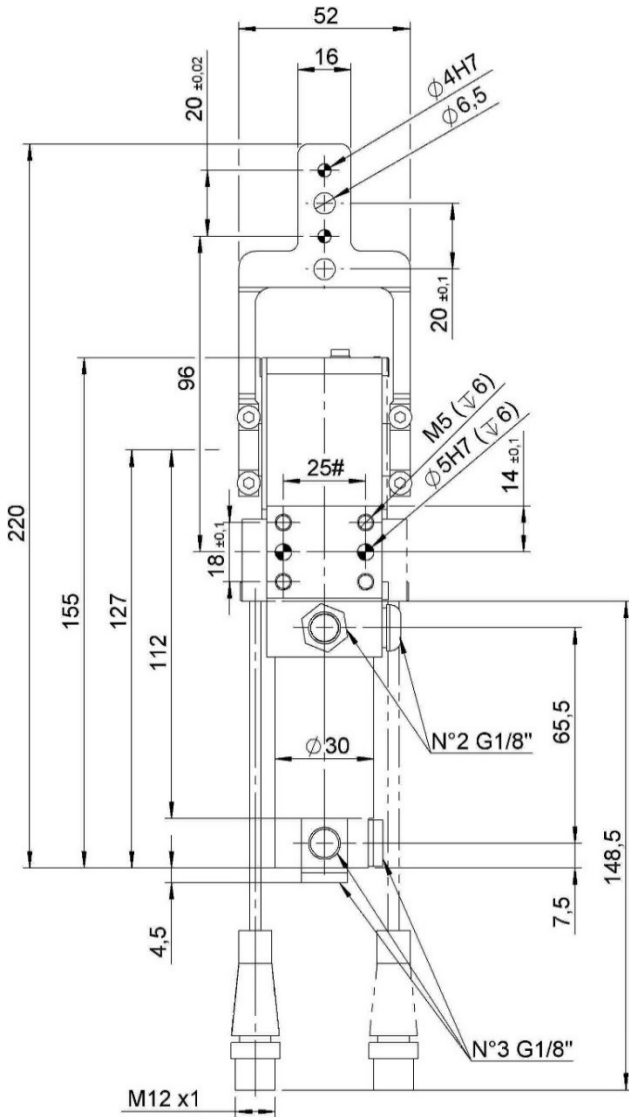
#Tolerances: dowel holes ±0.02, screw holes ±0.1

类型 Type	气缸缸径 Cylinder bore	保持力 Holding moment	重量 Weight	工作气压 Working pressure	最大夹紧力矩 (5 bar) Clamping max. torque (5 bar)	空气耗气量 (5 bar) Air consumption (5 bar)
	[mm]	[Nm]	[Kg]	[bar]	[Nm]	[l]
C25-VC...	25	75	~ 0.9	2 - 8	30	~ 0.2



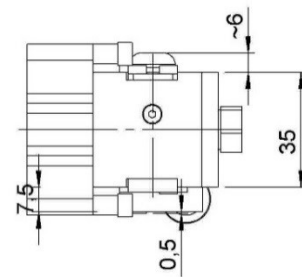
C25-OC...

夹紧器, D.25, 可调打开角度, 夹臂水平安装, 0mm 高度
 Clamp, D.25, Vario Op. Angle, Horizontal arm, Offset 0mm



标准打开角度 = 105°, 可调每 15°调整角度

Standard opening angle = 105°, it's possible to set a lower angles with steps of 15°.



#公差: 定位销孔 ±0.02, 螺丝孔 ±0.1

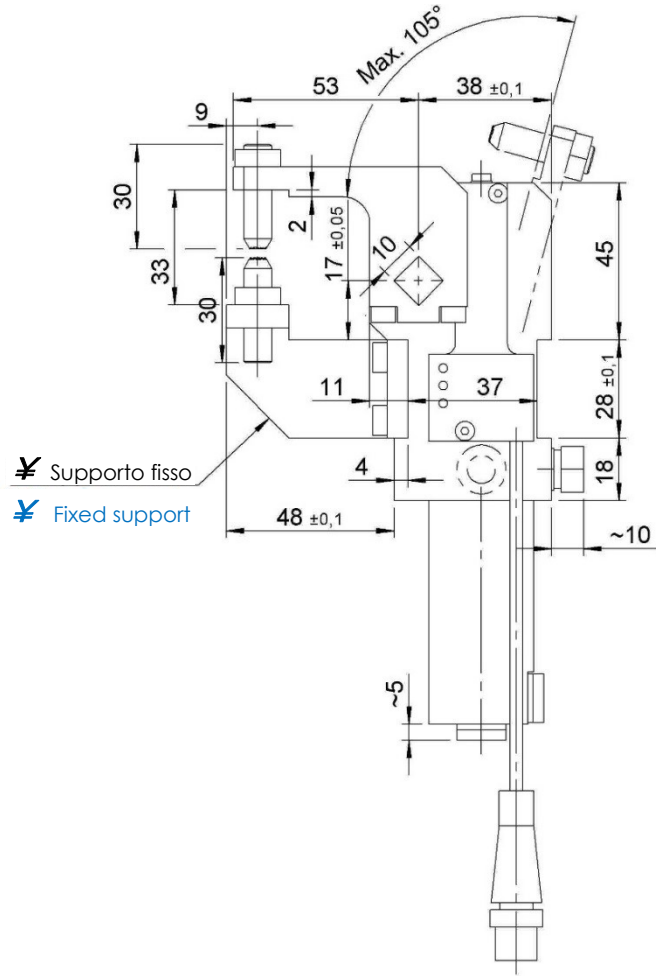
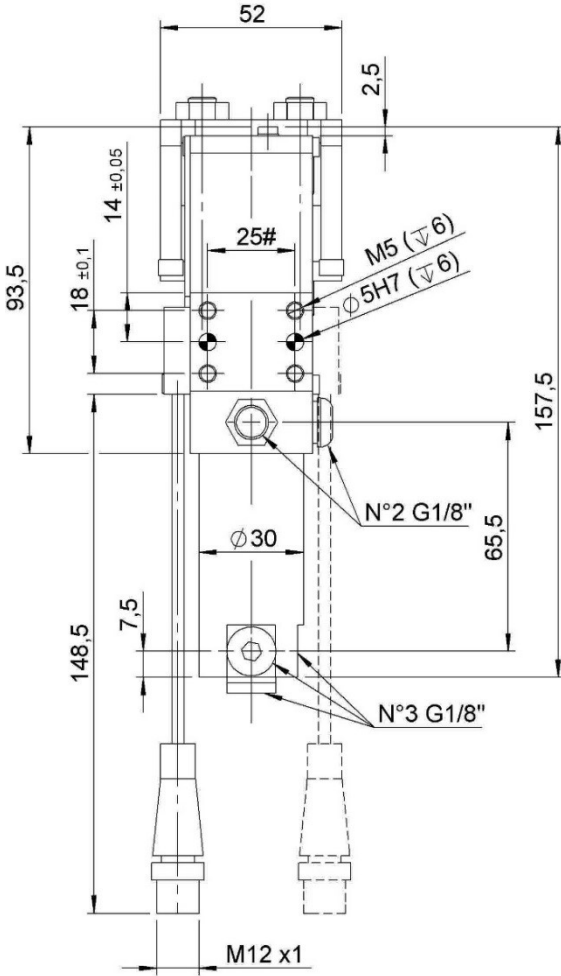
#Tolerances: dowel holes ±0.02, screw holes ±0.1

类型 Type	气缸缸径 Cylinder bore	保持力 Holding moment	重量 Weight	工作气压 Working pressure	最大夹紧力矩 (5 bar) Clamping max. torque (5 bar)	空气耗气量 (5 bar) Air consumption (5 bar)
	[mm]	[Nm]	[Kg]	[bar]	[Nm]	[l]
C25-OC...	25	75	~ 0.9	2 - 8	30	~ 0.2

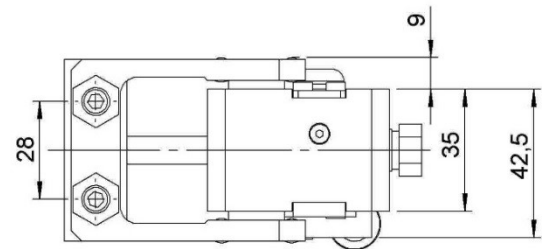


C25-G2...

夹紧器, D.25, 可调打开角度, 夹爪型夹臂, 2+2 销子, 固定支架
 Clamp, D.25, Vario Op. Angle, Gripper arm, 2+2 pins, fixed support



标准打开角度 = 105°, 可调每 15°调整角度
 Standard opening angle = 105°, it's possible to set a lower angles with steps of 15°.



✘	G2= 无固定支架 G2/2= 带固定支架
✘	G2= without fixed support G2/2= with fixed support

#公差: 定位销孔 ±0.02, 螺丝孔 ±0.1
 #Tolerances: dowel holes: ±0.02 | screw holes: ±0.1

类型 Type	气缸缸径 Cylinder bore	保持力 Holding moment	重量 Weight	工作气压 Working pressure	最大夹紧力矩 (5 bar) Clamping max. torque (5 bar)	空气耗气量 (5 bar) Air consumption (5 bar)
	[mm]	[Nm]	[Kg]	[bar]	[Nm]	[l]
C25-G2...	25	75	~ 1	2 - 8	30	~ 0,2

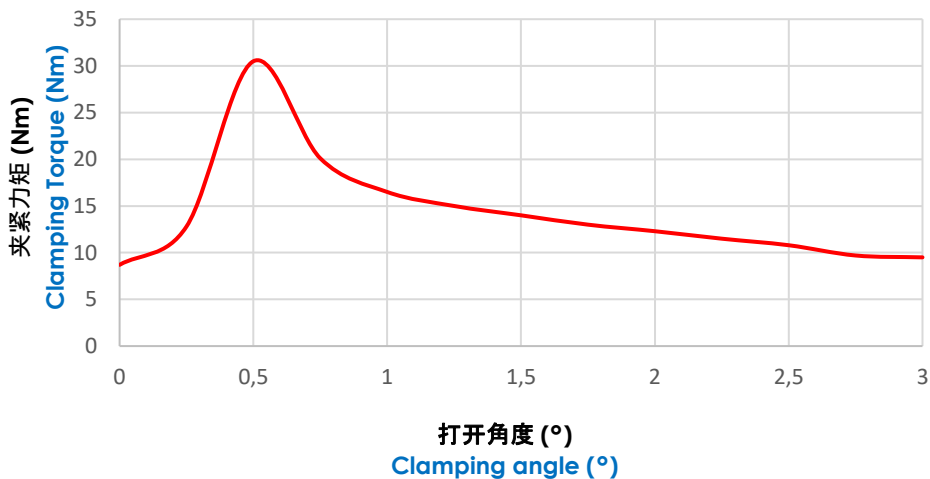


图表.

Diagrams.

夹紧力矩 (Nm).

Clamping torque (Nm).

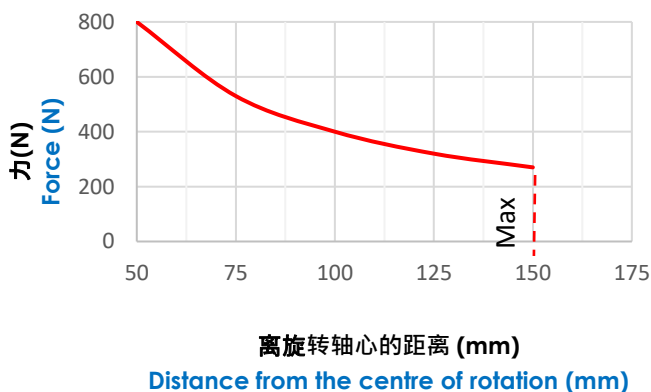


最大夹紧力矩 (5 bar): **30 Nm.**

Max. clamping torque (5 bar): **30 Nm.**

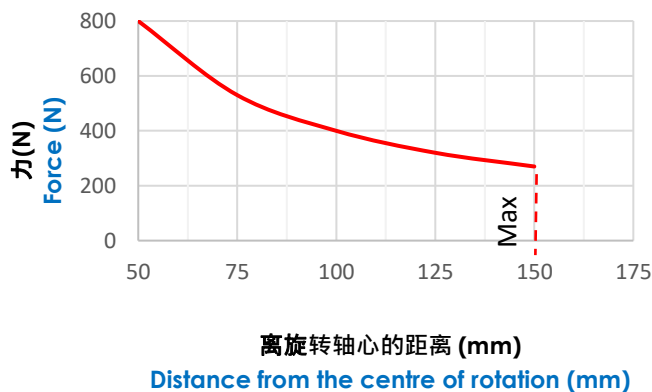
最大夹臂负载 (Kg).

Max. load applicable on the arm (Kg).



最大作用力 (N).

Max. force applied (N).



最大重力扭矩 (5 bar): **1Nm.**

Max. torque by weight (5 bar): **1Nm.**



电感式接近开关图表 (cod. 06160/C).

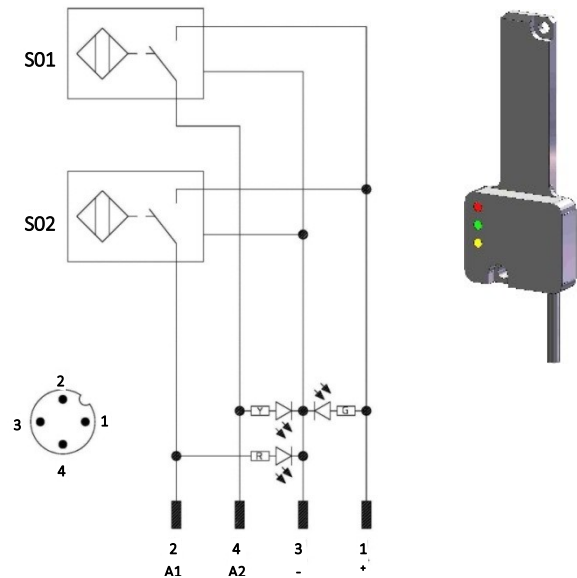
Diagram for Inductive proximity switch (cod. 06160/C).

技术数据 (VEP):

- 输出类型: PNP;
- 供电电压: 10-30 VDC;
- 最大换向电流: 200 mA;
- 电源供应: < 20 mA;
- 电压差: < 1,8 V
- 温度范围: -25° / 70° C.

Technical data (VEP):

- Output type: PNP;
- Feeding voltage: 10-30 VDC;
- Max. commutating current: 200 mA;
- Power supply: < 20 mA;
- Voltage drop: < 1,8 V;
- Temperature range: -25° / 70° C.



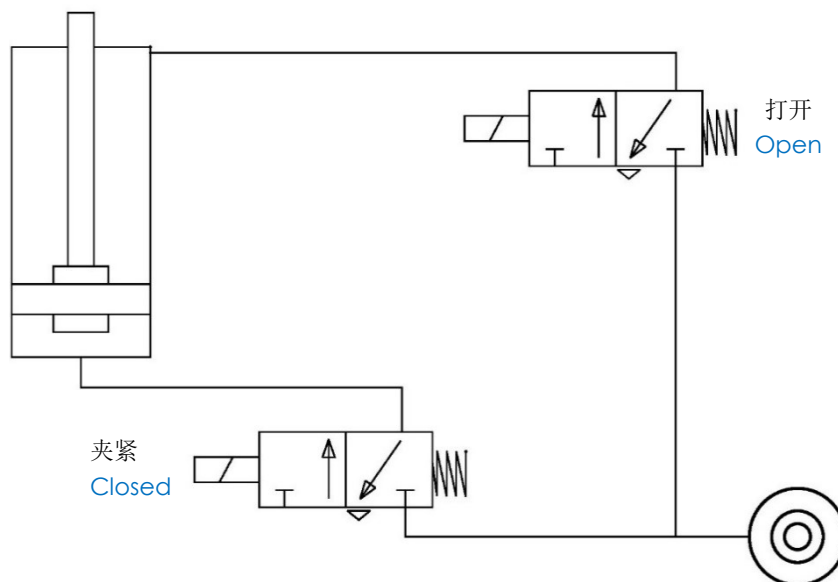
S01 = 打开信号
S01 = opening signal
S02 = 夹紧信号
S02 = closing signal

Y = 黄色 LED / yellow LED
G = 绿色 LED / green LED
R = 红色 LED / red LED

1 = 棕色线 / brown wire
2 = 黑色线 / black wire
3 = 蓝色线 / blue wire
4 = 白色线 / white wire

气路图.

Pneumatic plan.



工作气压 Working pressure	空气耗气量 (5 bar) Air consumption (5 bar)
[bar]	[l]
2 - 8	~ 0,2



操作说明.

Operating instructions.

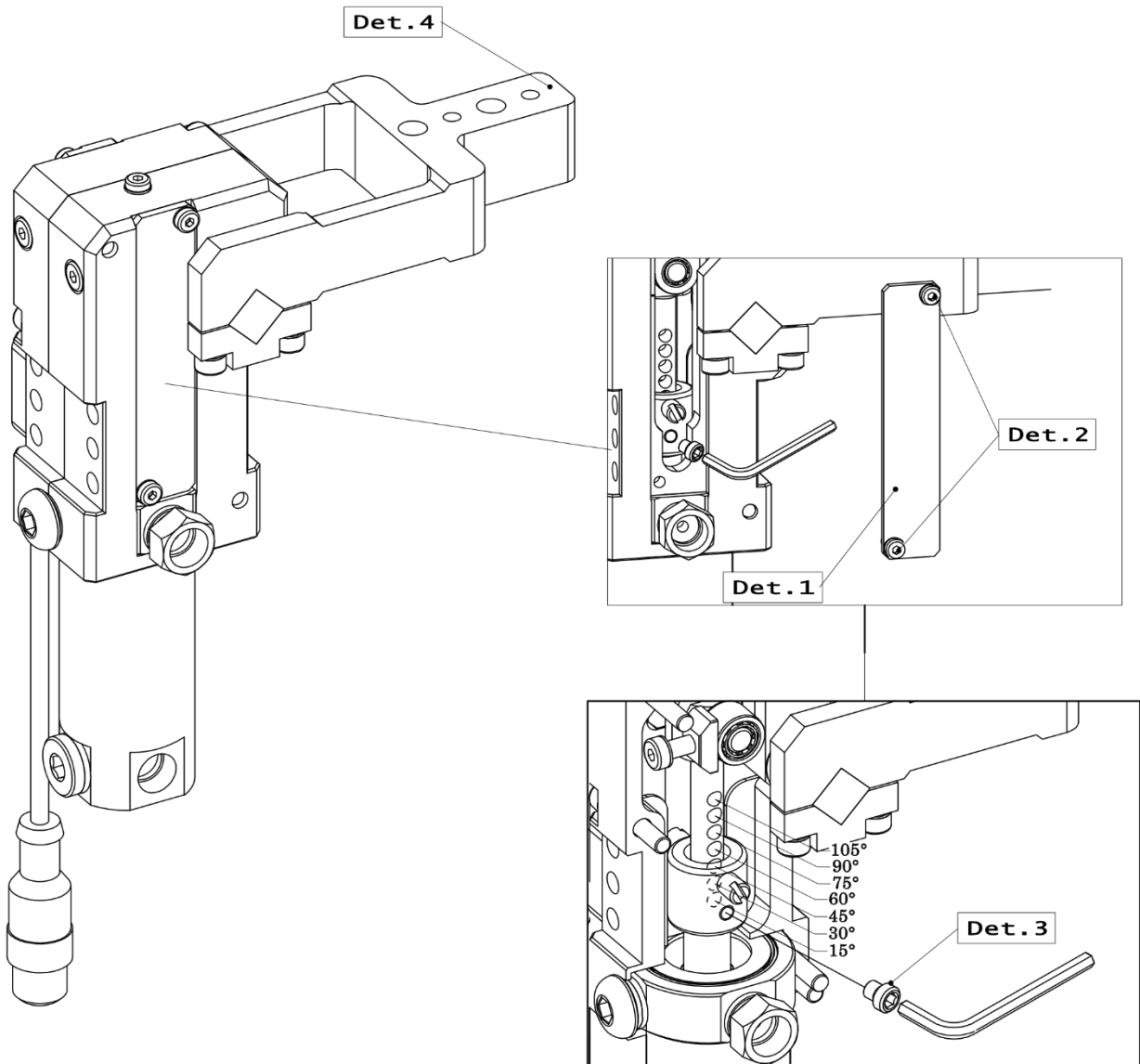
打开角度调整.

- 从传感器位置或者调整角度位置打开保护板 (Det.1), 松开 2 个 M3 螺钉 (Det.2), 松开螺纹销 (Det.3);
 - 移动夹臂到需要的角度位置 (Det.4);
 - 在正确的角度孔里拧紧螺纹销 (扭矩 = 8Nm), 并把保护板盖上.
- 电感式接近开关会自动调整, 无需进行其他操作.

Opening angle change.

- Remove the protection (Det.1) from the angle adjustment compartment or the inductive sensor, unscrewing the 2 screws M3 (Det.2), and unscrew the threaded pin (Det.3);
- Move the clamping arm (Det.4) to the required angular position;
- Tighten the threaded pin (clamping torque = 8Nm) in the hole that corresponding to the desired angle and refit the protection inside the compartment.

The setting of the inductive proximity switch is automatic and doesn't require any operation.





备件.

Spare parts.

# Kit	图片 Picture	描述 Description	代号 Code
夹臂装配 Arm asseblly		夹臂类型 VC 和OC Arm type VC and OC	06148/C
		夹臂类型 G2 Arm type G2	06283/C
支架 Support		固定支架 G2/2 Fixes support G2/2	06284/C/C
锁紧销 Lockpins		带六边形滚花头销钉 Pin with hexagonal knurled	3/329/C
		带圆头销钉 Pin with rounded head	05534/C
		带活动滚花头销钉 Pin with swiging knurled head	3/080/C
		带橡胶头销钉 Pin with rubber head	06516/C
接近开关 Proximity switch		VEP 电感式接近开关 Inductive proximity switch VEP	06160/C
密封圈 Seals kit		CPR25气缸密封圈 Seal components for pneumatic cylinder CPR25	SCR-CIL25
气缸 Pneumatic cylinder		完整的25 mm气缸 Complete pneumatic cylinder bore 25 mm	06145/C

.....

.....

.....

.....

.....

.....

.....

